



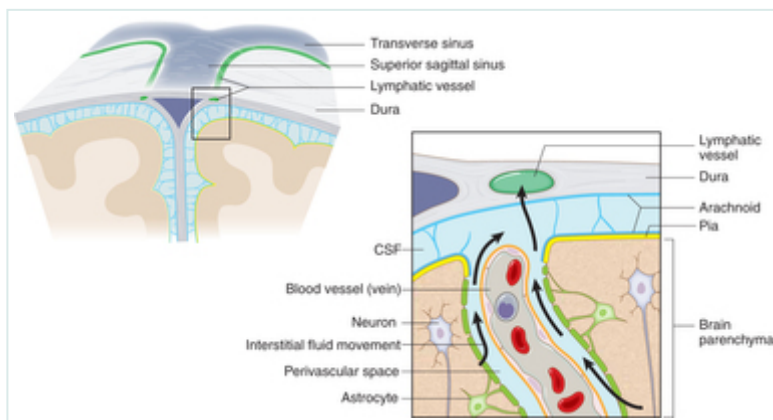
REGISTER HERE FOR OUR WEEKLY NEWSLETTER

HOT TOPICS Clinical and Scientific Insights 2017 Nutrigenomics Inflammation Antioxidants
Gastrointestinal Health Functional Medicine

TOP READ Newly Found Lymphatic System Connects Brain & Immunity

August 17, 2015 in **Alzheimer's, Autism, Autoimmune Disease, Brain and Nervous System, Home, Home Slider, Immune Health, Multiple Sclerosis**

You can forget everything you learned in medical school about the lymphatic system (well, not everything). But researchers at the University of Virginia found undiscovered vessels that directly connect the brain and lymphatic system, as published in *Nature*. Despite decades of contrary opinions they did not exist, this changes everything we understand diseases like autism, Alzheimer's and multiple sclerosis. "The first time these guys showed me the basic result, I just said one sentence: 'They'll have to change the textbooks,'" said Kevin Lee, PhD, chairman of the UVA Department of Neuroscience, described his reaction to the discovery. "There has never been a lymphatic system for the central nervous system, and it was very clear from that first singular observation – and they've done many studies since then to bolster the finding – that it will fundamentally change the way people look at the central nervous system's relationship with the immune system."



It's a stunning discovery that overturns decades of textbook teaching, said researchers at the School of Medicine. They are surprised as any that such vessels could have escaped detection when the lymphatic system has been so thoroughly mapped throughout the body is surprising on its own, but the true significance of the discovery lies in the effects it could have on the study and treatment of neurological diseases ranging from autism to Alzheimer's disease to multiple sclerosis. "Instead of asking, 'How do we study the immune response of the brain?' 'Why do multiple sclerosis patients have

the immune attacks?' now we can approach this mechanistically. Because the brain is like every other tissue connected to the peripheral immune system through meningeal lymphatic vessels," said Jonathan Kipnis, PhD, professor in the UVA Department of Neuroscience and director of UVA's Center for Brain Immunology and Glia (BIG). "It changes entirely the way we perceive the neuro-immune interaction. We always perceived it before as something esoteric that can't be studied. But now we can ask mechanistic questions." "We believe that for every neurological disease that has an immune component to it, these vessels may play a major role," Kipnis said. "Hard to imagine that these vessels would not be involved in a [neurological] disease with an immune component."

"Very well hidden"

Even Kipnis was skeptical initially. "I really did not believe there are structures in the body that we are not aware of. I thought the body was mapped," he said. "I thought that these discoveries ended somewhere around the middle of the last century. But apparently they have not."



The discovery was made possible by the work of Antoine Louveau, PhD, a postdoctoral fellow in Kipnis' lab. The vessels were detected after Louveau developed a method to mount a mouse's meninges – the membranes covering the brain – on a single slide so that they could be examined as a whole. "It was fairly easy, actually," he said. "There was one trick: We fixed the meninges within the skullcap, so that the tissue is secured in its physiological condition, and then we dissected it. If we had done it the other

way around, it wouldn't have worked."

After noticing vessel-like patterns in the distribution of immune cells on his slides, he tested for lymphatic vessels and there they were. The impossible existed. The soft-spoken Louveau recalled the moment: "I called Jony [Kipnis] to the microscope and I said, 'I think we have something.'"

As to how the brain's lymphatic vessels managed to escape notice all this time, Kipnis described them as "very well hidden" and noted that they follow a major blood vessel down into the sinuses, an area difficult to image. "It's so close to the blood vessel, you just miss it," he said. "If you don't know what you're after, you just miss it."

"Live imaging of these vessels was crucial to demonstrate their function, and it would not be possible without collaboration with Tajie Harris," Kipnis noted. Harris, a PhD, is an assistant professor of neuroscience and a member of the BIG center. Kipnis also saluted the "phenomenal" surgical skills of Igor Smirnov, a research associate in the Kipnis lab whose work was critical to the imaging success of the study.

Alzheimer's, autism, MS and beyond

The unexpected presence of the lymphatic vessels raises a tremendous number of questions that now need answers, both about the workings of the brain and the diseases that plague it. For example, take Alzheimer's disease. "In Alzheimer's, there are accumulations of big protein chunks in the brain," Kipnis said. "We think they may be accumulating in the brain because they're not being efficiently removed by these vessels." He noted that the vessels look different with age, so the role they play in aging is another avenue to explore. And there's an enormous array of other neurological diseases, from autism to multiple sclerosis, that must be reconsidered in light of the presence of something science insisted did not exist.

0

RELATED ARTICLES

◆ [brain and immunity, central nervous system, lymphatic system, University of Virginia](#)

< Opioids may exacerbate pain, new study shows
You must be logged in to post a comment.

Balancing Priorities as Integrative Healthcare Providers >

Profile